

Mounted Combat Arts

[www.MountedCombatArts.com](http://www.MountedCombatArts.com)

# MCA



## Clinic Package Details & Pricing for 2020



## Table of Contents

|                                |   |
|--------------------------------|---|
| Introduction.....              | 3 |
| Clinic Objectives.....         | 5 |
| Clinic Pricing.....            | 5 |
| Clinic Schedule .....          | 6 |
| Day 1 .....                    | 6 |
| Day 2 .....                    | 7 |
| Clinic Rules .....             | 8 |
| What to Bring.....             | 9 |
| Host Contact Information ..... | 9 |



## Introduction

### What is the MCA?

MCA stands for; **Mounted Combat Arts**. We are an active learning group that studies **three core** disciplines with our end goals focusing on *event demonstrations* and *film work*. What we bring to the public spans across the history of mankind, from the Bronze Age all the way up to today’s Modern use, as we aim to **demonstrate** and **educate** how horses were used in warfare throughout our history.

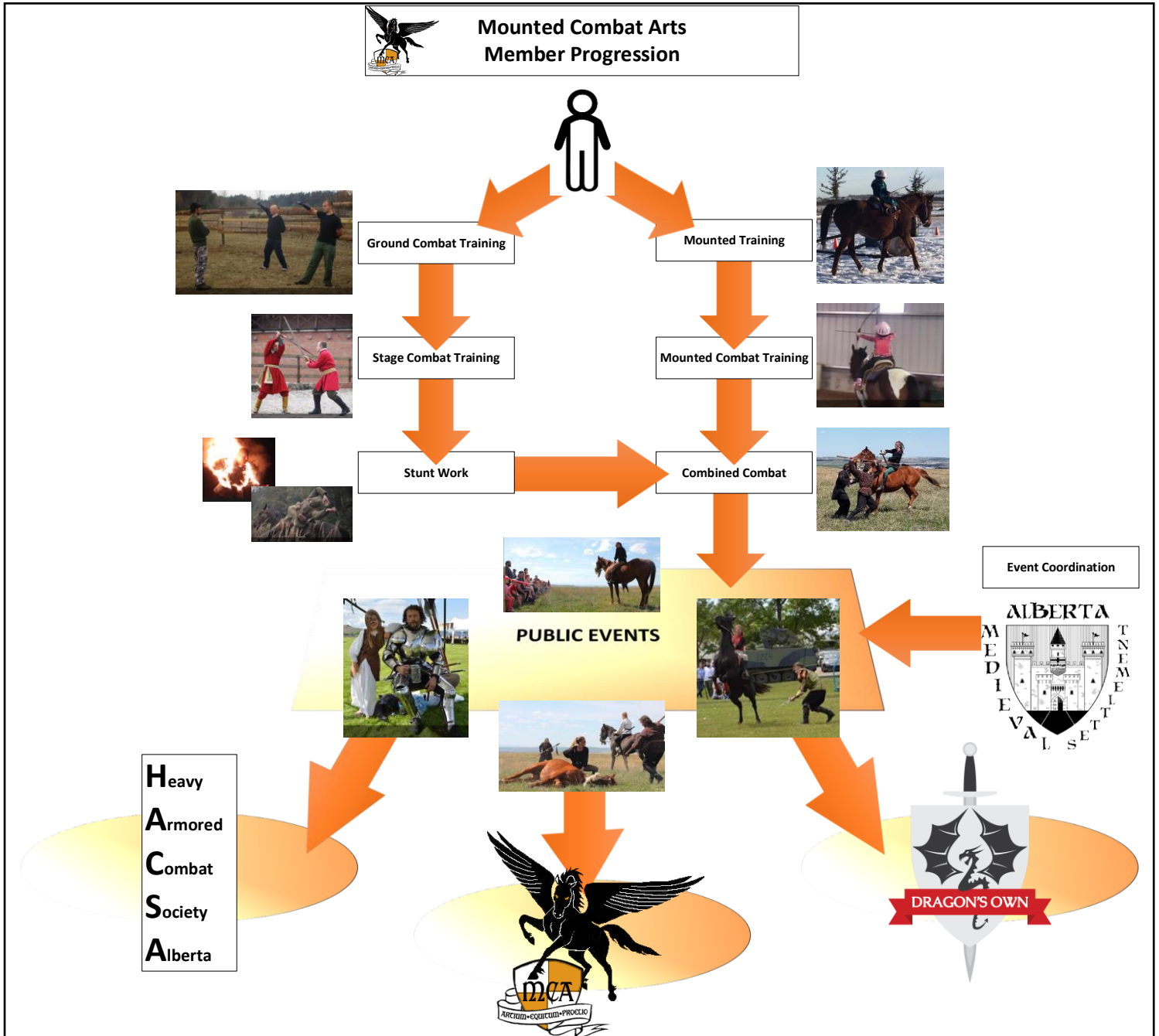
#### Disciplines we study:

| Mounted Combat  | Ground Combat  |
|---|--|
| <p>MCA members who work with our mounted division study the following:</p> <ul style="list-style-type: none"> <li>• Working around horses               <ul style="list-style-type: none"> <li>○ Ground safety, leading, tying, tack</li> </ul> </li> <li>• Mounting and Dismounting</li> <li>• Basic mounted control</li> <li>• Advance mounted control</li> <li>• Mounted Weaponry               <ul style="list-style-type: none"> <li>○ Following <b>historically accurate</b> practices</li> </ul> </li> </ul> | <p>All of our Ground Combat Training is based off of <b>historically accurate</b> Medieval HEMA, members study the following:</p> <ul style="list-style-type: none"> <li>• Footwork</li> <li>• Weapon basics such as: warmups &amp; weapon handling</li> <li>• Weapon Kata</li> <li>• Weapon sparring</li> </ul> <p>We apply these practices to a large verity of weapons; swords, staves, axes, knives, polearms &amp; hand-to-hand</p> |

| Stage Combat  |
|---|
| <p>Once our members have gone through our Mounted Combat or Ground Combat (or both) training programs; members are then brought through our Stage Combat program before being allowed to perform in event or join on set for film work.</p> <p>Stage Combat lessons teach a large array of specialized training such as:</p> <ul style="list-style-type: none"> <li>• Film base stunt work</li> <li>• Ground and mounted choreographed fight scenes</li> <li>• Safe performance practices to grow into performing for live demonstrations and professional film work</li> </ul> |



Below is a flowchart that provides a visual overview of how members progress through the training program of the Mounted Combat Arts, from new recruit to active member on the event demonstration team. With safety being our **primary focus**, any group we work with for events goes through our Combined Combat training so external groups learn and understand how to work around the horses.





## Clinic Objectives

### Ground Combat Training

Safety, spacing, footwork, control of weapon, balance in movement, FUN!

### Mounted Combat Training

How to safely introduce yourself and horse to unfamiliar objects and start on you and your horse on the path of mounted combat safely, accurately and confidently.

## Clinic Pricing

### Ground Combat Only

- **\$75.00 CAD for 2-days (3-hours each day)**
  - **Spear Study** (2 hours)
  - **Sword Study** (2 hours)
  - **Bow Study** (2 hours)
  - **Includes Mounted Combat spectator ticket**
- **\$15.00 CAD for 1-class**
  - **1 x 1-hour class with your choice of one of the following weapon disciplines**
    - **Spear Study**
    - **Sword Study**
    - **Bow Study**
  - **Includes Mounted Combat spectator ticket**

### Ground and Mounted Combat

- **\$275.00 CAD for full 2-days (6-hours each day)**
  - **Spear Study** (2 hours)
  - **Sword Study** (2 hours)
  - **Bow Study** (2 hours)
  - **Mounted Combat Study (all weapons)** (6 hours).
- **\$150.00 CAD for 1-day**
  - **Spear Study** (1 hour)
  - **Sword Study** (1 hour)
  - **Bow Study** (1 hour)
  - **Mounted Combat Study (all weapons)** (3 hours)

**Host has pens available at \$25.00** a night for horses. Have your own buckets and feed.

**Host administrated fee is \$55.00** this includes ***lunch and drinks*** for participants both days.

**Spectator Fee: \$15.00 CAD for 1-day can be paid at door exact cash please.**



## Clinic Schedule – Day 1 – Saturday May 30<sup>th</sup>, 2020

| Table Colour Legend              |
|----------------------------------|
| Ground Combat Only Students      |
| Ground & Mounted Combat Students |
| All Students                     |
| Lunch Break                      |

|              | Ground Combat Only  | Ground & Mounted Combat   |                |
|--------------|---|---|----------------|
| <b>DAY 1</b> | <b>Saturday May 30th 2020</b>   |   |                |
| 8:00am       | Check-In with Host and Clinic Sign-In<br>Introduction of instructors and students               |   |                |
| 9:00am       | <u>Spear Study</u><br>Safety and Handling<br>Footwork<br>Spacing<br>1-to-10 Slow Contact Drills |   | Ground Clinic  |
| 9:30am       |   |   |                |
| 10:00am      |   |   |                |
| 10:30am      | <u>Sword Study</u><br>Safety and Handling<br>Footwork<br>Spacing<br>1-to-10 Slow Contact Drills |   | Ground Clinic  |
| 11:00am      |   |   |                |
| 11:30am      | <u>Bow Study</u><br>Safety and Handling<br>Targeting<br>Practice                                |   | Ground Clinic  |
| 11:45am      | MCA Instructor Ground Combat Demonstration  |   |                |
| 12:00pm      | Lunch Break   |   | Ground Clinic  |
| 1:00pm       |   |   |                |
| 2:00pm       | May observe mounted clinic  | 1) Safety Inspection of equipment of horse and rider<br>2) Briefing on introducing horses to weapons and movement<br>3) Start desensitization training with horses<br>4) When safe, mount and instruct slow use whilst mounted<br>5) When safe, introduce targets | Mounted Clinic |
| 2:30pm       |   |   |                |
| 3:00pm       |   |   |                |
| 3:30pm       |   |   |                |
| 4:00pm       |   |   |                |
| 4:30pm       |   |   |                |
| 5:00pm       |   |   |                |



## Clinic Schedule – Day 2 – Sunday May 31<sup>st</sup>, 2020

| Table Colour Legend              |
|----------------------------------|
| Ground Combat Only Students      |
| Ground & Mounted Combat Students |
| All Students                     |
| Lunch Break                      |

| DAY 2                | Ground Combat Only  | Ground & Mounted Combat   |                |
|----------------------|---|---|----------------|
| Sunday May 31st 2020 |   |   |                |
| 8:00am               | Check-In with Host and Clinic Sign-In<br>Introduction of instructors and students               |   |                |
| 9:00am               | <u>Spear Study</u><br>Safety and Handling<br>Footwork<br>Spacing<br>1-to-10 Slow Contact Drills |   | Ground Clinic  |
| 9:30am               |   |   |                |
| 10:00am              | <u>Sword Study</u><br>Safety and Handling<br>Footwork<br>Spacing<br>1-to-10 Slow Contact Drills |   |                |
| 10:30am              |   |   |                |
| 11:00am              | <u>Bow Study</u><br>Safety and Handling<br>Targeting<br>Practice                                |   |                |
| 11:30am              |   |   |                |
| 11:45am              | Introduction to Ground Combat Choreography Building   |   |                |
| 12:00pm              | Lunch Break   |   |                |
| 1:00pm               |   |   |                |
| 2:00pm               | <i>May observe mounted clinic</i>   | 1) Safety Inspection of equipment of horse and rider  | Mounted Clinic |
| 2:30pm               |   | 2) New riders briefing and intro training   |                |
| 3:00pm               |   | 3) Riders to continue target practice and start using their horse as a weapon (leg pressure, 3 buttons training etc.) |                |
| 3:30pm               |   | 4) Advanced and confident pairs will be matched up and start to engage each other with weapons, excluding bow.        |                |
| 4:00pm               |   |   |                |
| 4:30pm               |   |   |                |
| 5:00pm               |   |   |                |



## Clinic Rules

Any person or horse not following the clinicians and property rules, regulations, guidelines and codes of conduct will be asked to leave with no refund.

### **TIMES**

Please plan to arrive at the event location between 8:00 and 8:30 a.m. This will allow time for unloading horses and supplies, making sure that all required forms are signed and a general settling-in before the clinic begins. The clinic start time is 9:00am. All students will meet in the designated training arena **WITHOUT** your horse at 9:00am each day for the Ground Combat session.

There will be a 2 hour break each day for lunch. Tickets available for lunch at \$10.00 a person. For spectators, please bring correct amount.

Approximate end time is 4:30 to 5:00 p.m. each day, but please keep in mind that this may vary because we're on horse time!

### **RIDER INFORMATION**

You'll receive a package from your Clinic Host containing the following forms:

- Rider Confirmation
- Young Rider Authorization (for riders between 12 and 16; minimum age of 12)
- Liability Release Waiver

Please review all forms carefully and return to your Clinic Host prior to the event or at the event. The Liability Release Waiver must be signed and witnessed, as well, the original must be returned to your Host.

### **RECORDING**

Video recording (or any other type of recording device) is not permitted during the clinic. Please pass this information on to any friends or family members that may be attending to watch. Take as many still photographs as you'd like, but keep in mind that the photos are meant to be for your personal use only and may not be used for public display or any commercial purposes. You may not publish or display any photos of Mounted Combat Arts members, **THE CLINIC HOST NAME**, or any other clinic instructor without their written consent.

### **CANCELLATION POLICY**

**All monies are non-refundable.**

**Cancellation more than 30 Days Prior to the event:** A \$25.00 Administration fee will be charged.

*(The remaining amount will be refunded.)*

**Cancellation after full payment has been made, and within 30 days of the event:** A \$50.00 administration fee will be charged.

*(The remaining amount can be used towards a Clinic Transfer or will be refunded.)*

**Cancellation within 7 days of the event:**

A \$50.00 administration fee will be charged. The facility fee for the arena will also be deducted if we are unable to fill your position.

*(The remaining amount can be used towards a Clinic Transfer or will be refunded.)*





## What to Bring

### **EQUIPMENT**

#### **Ground Combat Only Students**

- Valid 2020 AEF Membership
- Boots and appropriate clothing for the weather
- Water Bottle

#### **Ground & Mounted Combat Students**

- Valid 2020 AEF Membership
- Safety Helmet (Riders under 18 **MUST** wear a helmet)
- Horse & Tack
- Boots and appropriate clothing for the weather
- Water Bottle

### **HORSE REQUIREMENTS/PRE-REQUISITES**

This is NOT a colt-starting clinic. The horse must be at least three years old and be able to **WALK, TROT** and **CANTER** under saddle. Don't worry if you don't canter. If you have concerns about your horse, please speak directly to your Host. Remember, this course is also focused on teaching people — we're here to support you. As a student, you're coming to learn about your own set of skills as well as learning to teach your horse. This course is designed for people who are brand new to mounted combat and ground combat using medieval weaponry. This course is about setting a new foundation of knowledge.

## Host Contact Information

### **Kathy Shadwell**

306-661-0847

heartland1259@yahoo.ca

### **Heartland Equine Services/arena**

Hwy #1 to Maple Creek, SK

Turn on to Hwy 21 come into Maple Creek

Over train tracks turn right.

Second stop sign turn left (you are still on hwy 21)

At edge of town (hospital) we are 11 km from town.

3<sup>rd</sup> lane way after 2<sup>nd</sup> bridge. Right hand side. Signs will be up.